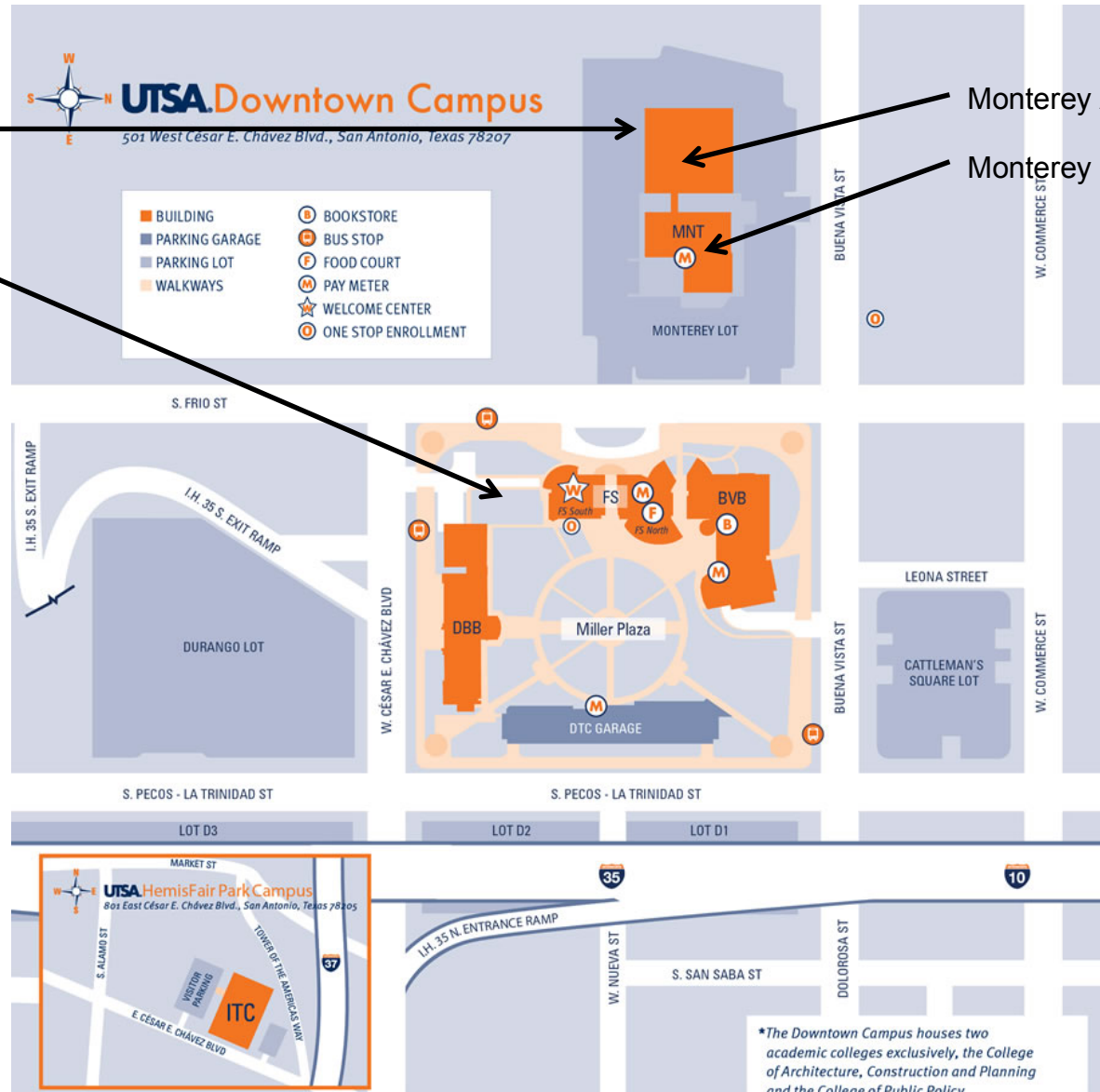


NAAB Appendix R: Building Plans

The UTSA Architecture programs and coursework (including Master of Architecture courses) are taught primarily in the Monterey Building (which the maps below document) but other courses (mostly lecture/seminar) are also taught in a variety of spaces across the Downtown campus.

Monterey Buildings

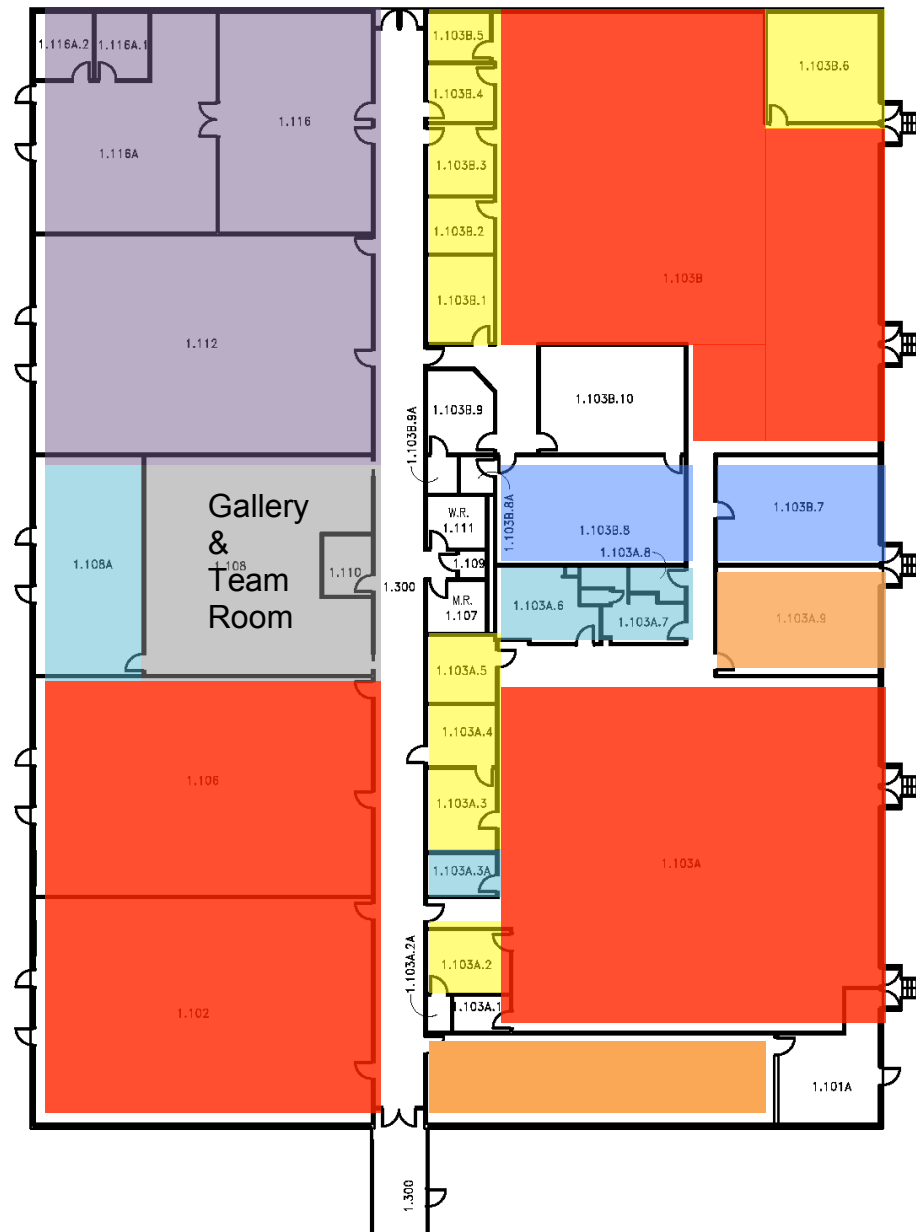
Downtown Campus



Monterey Annex

Monterey Building

Monterey Annex



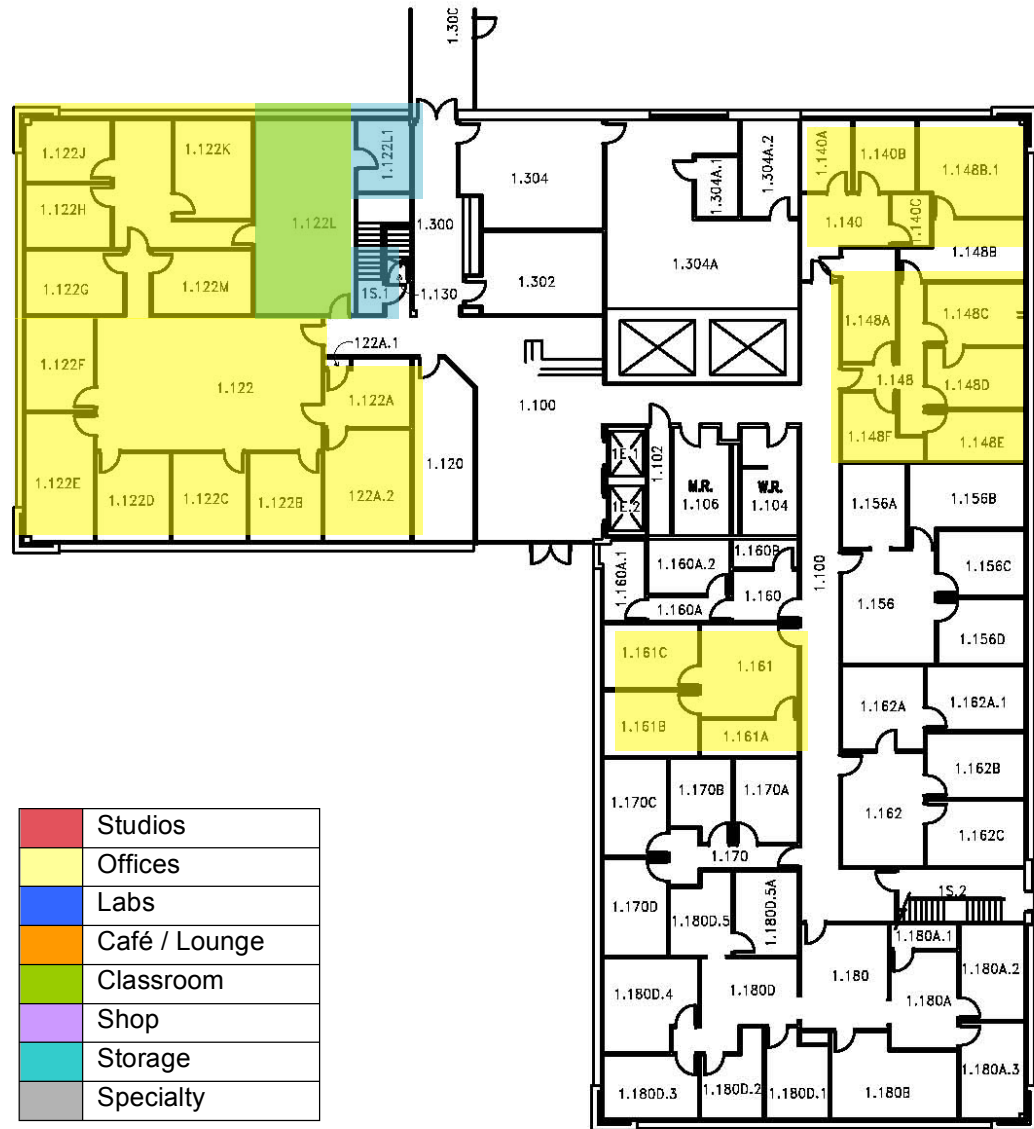
	Studios
	Offices
	Labs
	Café / Lounge
	Classroom
	Shop
	Storage
	Specialty

First Level Floor Plan - West Wing
U.T.S.A. MONTEREY BUILDING

(Bldg.Abbrev.: MNT Bldg.No.: 0660)

Revised: 6/17/2011 - No Scale - UTSA Office of Space Management

Monterey Building



	Studios
	Offices
	Labs
	Café / Lounge
	Classroom
	Shop
	Storage
	Specialty

First Level Floor Plan - East Wing (Bldg.Abbrev.: MNT Bldg.No.: 0660)
U.T.S.A. MONTEREY BUILDING
 Revised: 6/17/2011 - No Scale - UTSA Office of Space Management



Second Level Floor Plan (Bldg.Abbrev.: MNT Bldg.No.: 0660)
U.T.S.A. MONTEREY BUILDING
 Revised: 6/17/2011 - No Scale - UTSA Office of Space Management

This floor reserved primarily for M. Arch Students.

3rd Floor



	Studios
	Offices
	Labs
	Café / Lounge
	Classroom
	Shop
	Storage
	Specialty